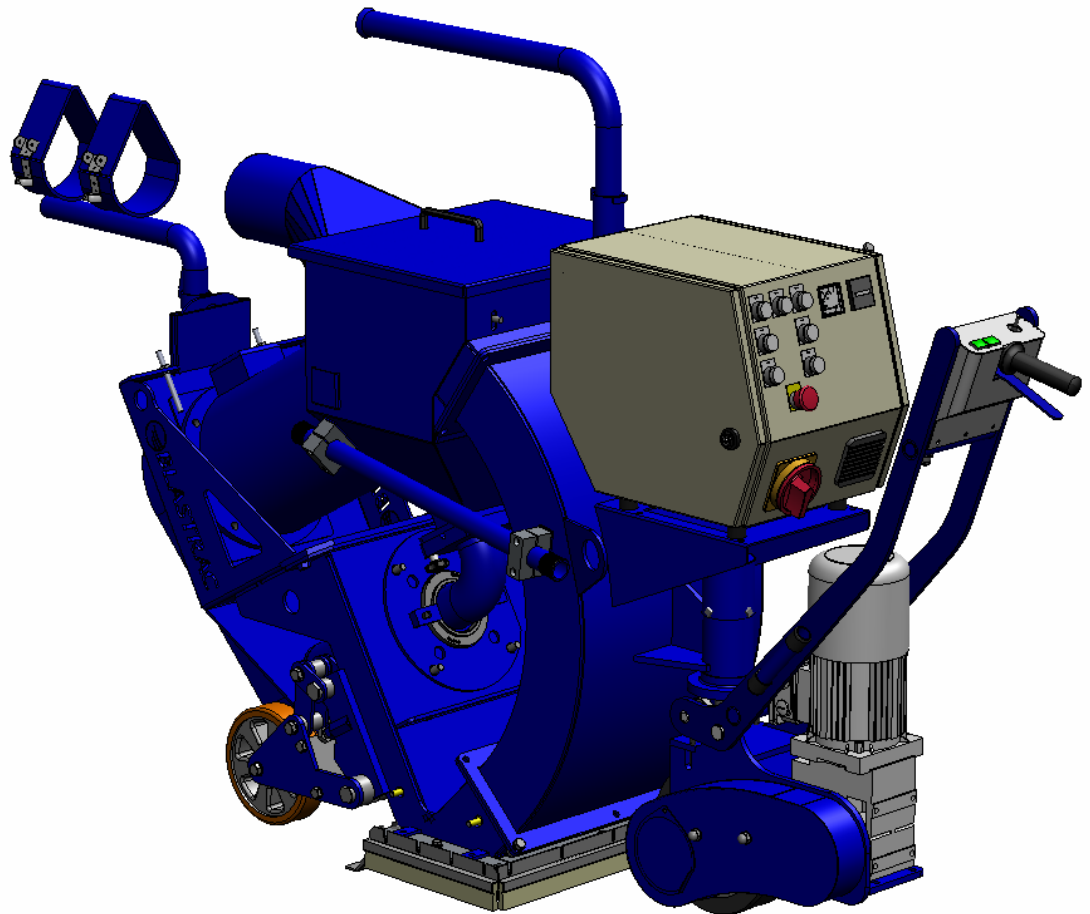




1-15DS Global

Version 1.0



EC DECLARATION OF CONFORMITY

in accordance with Appendix II sub A of Directive 98/37/EC

BLASTRAC B.V.

Utrechthaven 12
NL - 3433 PN NIEUWEGEIN
Tel: 0031 (0)30 601 88 66
Fax: 0031 (0)30 601 83 33
Info@Blastrac.nl
The Netherlands

Declare under our sole responsibility that the machine as described below
Conforms with the Health and Safety requirements of the European Directive
of the machine Safety.

In case of changes to the machine without our written authorization this declaration loses
its validity.

Model: *BLASTRAC 1-15DS Global* **Serial number:**

1. satisfies the conditions set out in the Machine Directive (Directive 98/37/EC); Low voltage directive (73/23/CEE, as last amended; EMC directive 89/336/CEE, as last amended)
2. satisfies the following harmonized standards:
NEN-EN 349, NEN-EN 418, NEN-EN 294 and NEN-EN 60204

Nieuwegein



Michiel Kalisvaart



Index

1. Spare parts	04
2. Maintenance box	13
Contact	



1. Spare parts

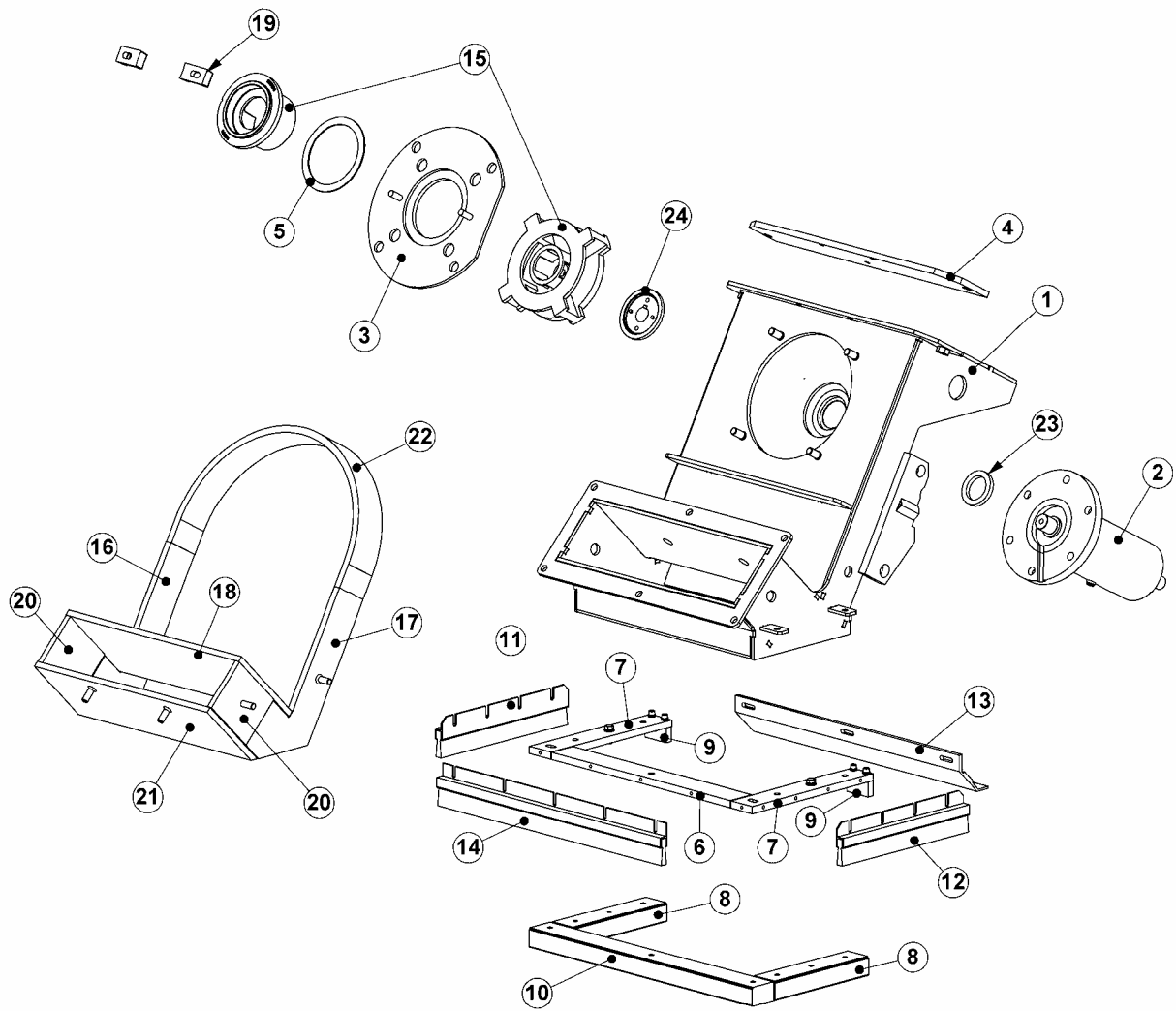


Fig. 01

Fig. 01

Item	Part number	Description	Remarks	Qty.
1	E00751	Blasthousing 1-15DS Global		1
2	E00842	Bearing unit complete		1
3	979644	Blastwheel cover plate		1
4	B20458	Blasthousing cover		1
5	972781	Control cage shim		1
6	971851	Insulator front		1
7	489945	Insulator side		2
8	490047	Magnet side		2
9	481350	Spacer side magnet rear		2
10	971884	Magnet front		1
11	B20413	Side brush RH		1
12	B20424	Side brush LH		1
13	682652	Skid seal		1
14	B20412	Front brush		1
15	B20536K	Tune up kit		1
16	B20394	Side liner left hand		1
17	B20395	Side liner right hand		1
18	970151	Plenum top liner		1
19	969803	Control cage clamp		2
20	970153	Plenum bottom side liner		2
21	970152	Plenum bottom		1
22	B20907	Top liner		1
23	B20295	Felt seal Ø60x8		1
24	B20397	Hub		1

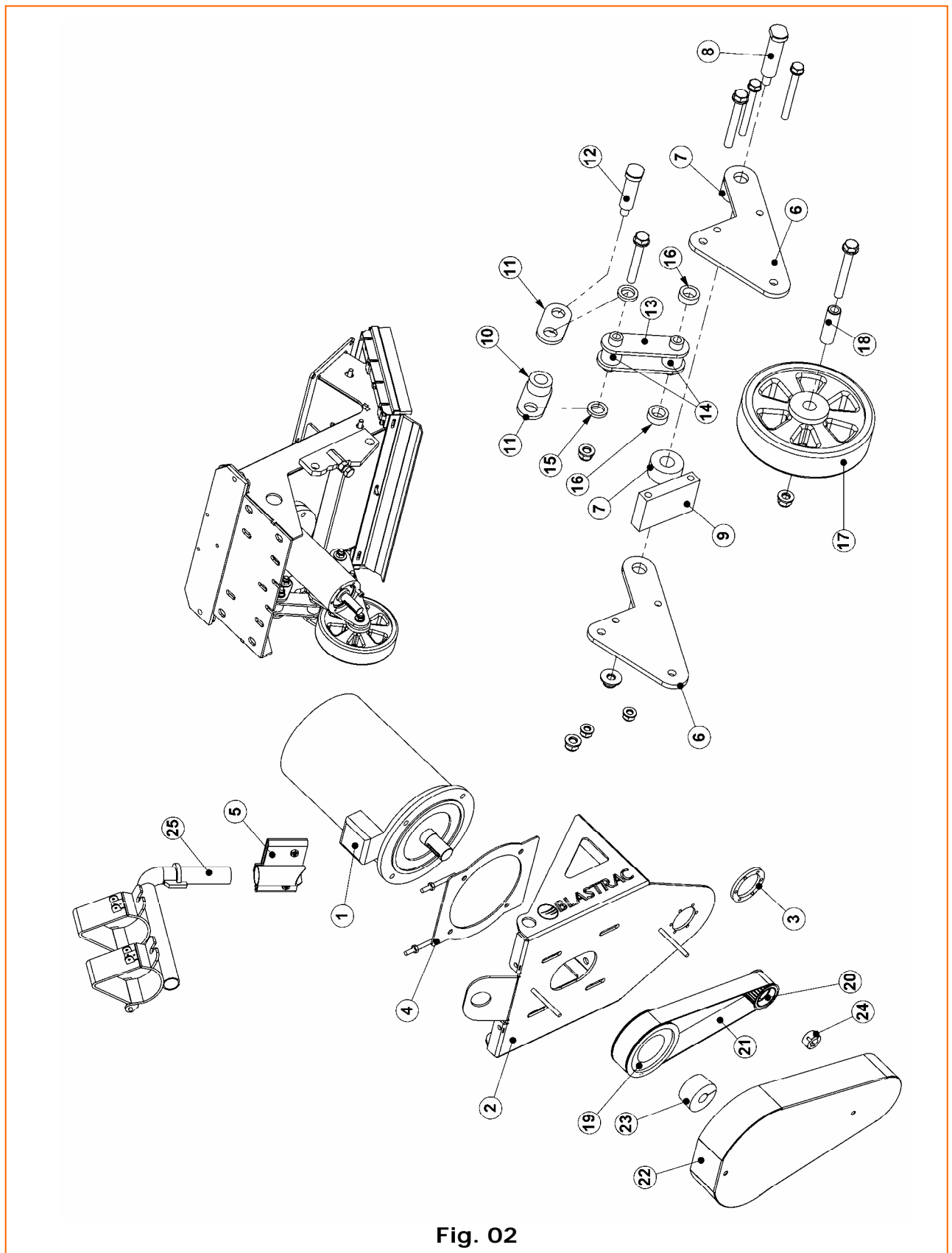


Fig. 02

Fig. 02

Item	Part number	Description	Remarks	Qty.
1	E06511	Blastmotor 15 kW		1
2	E06512	Motorbracket		1
3	E00864	Fill up ring bearing unit		1
4	E06513	Fill up plate blastmotor		1
5	E00745	Cable guide bracket		1
6	E06465	Wheel bracket side plate		4
7	E06472	Wheel bracket bush		4
8	E06468	Bottom bolt		2
9	E06475	Distance plate		2
10	E06474	Lever bush top		4
11	E06467	Top lever		4
12	E06469	Top bolt		2
13	E06466	Bottom lever		4
14	E06471	Lever shaft		4
15	E06855	Lever bush middle		4
16	E06473	Lever bush bottom		4
17	B20842	wheel		2
18	E06470	Idler wheel bush		2
19	B20429-1	Pulley	50Hz	1
	B21340	Pulley	60Hz	1
20	B20430-1	Pulley	50Hz	1
	B21341	Pulley	60Hz	1
21	B20428	Belt		1
22	B20224	Pulley guard		1
23	E06514	Taperlock		1
24	222-2172-V	Taper lock		1
25	E00835	Cable guide		1

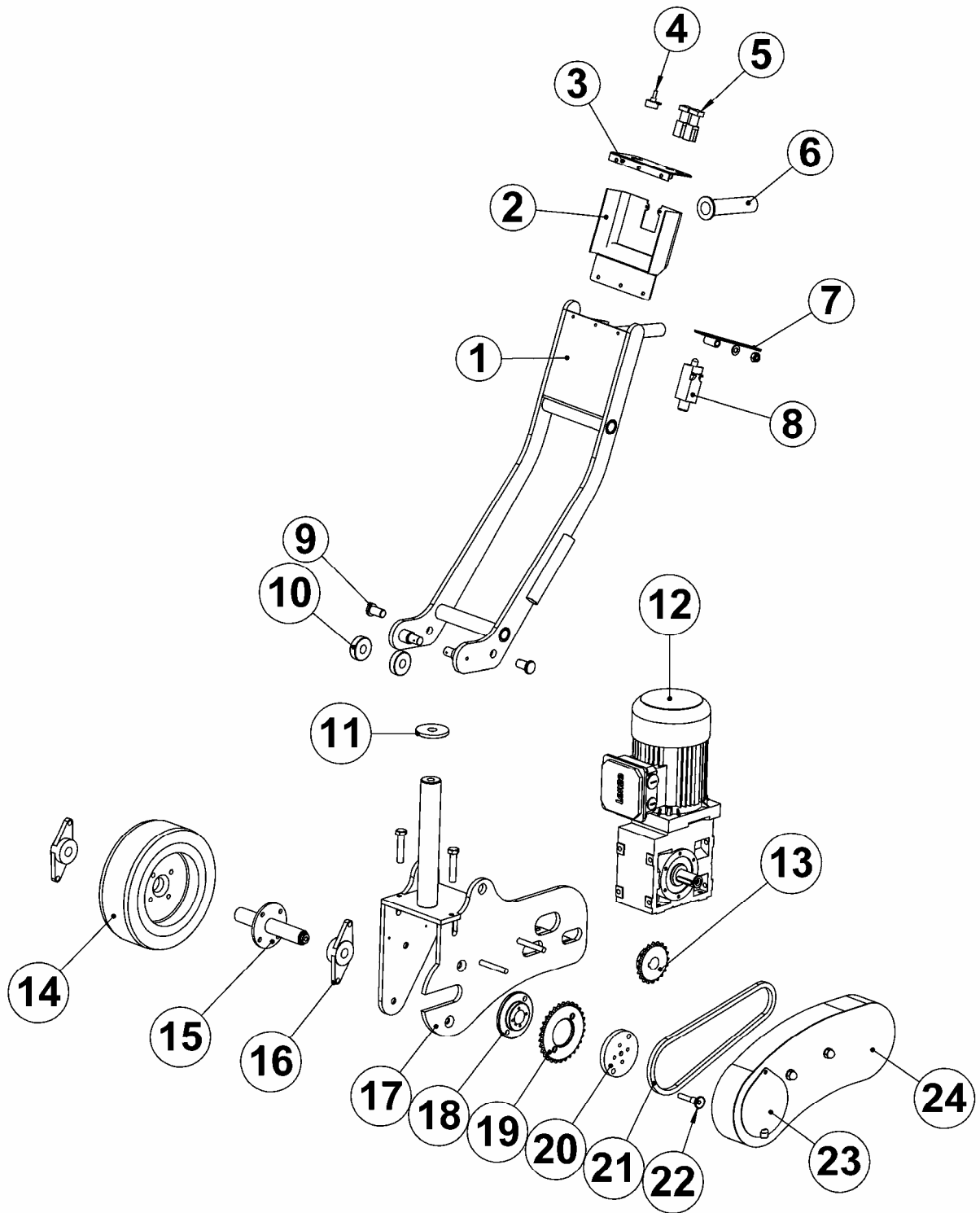


Fig. 03

Fig. 03

Item	Part number	Description	Remarks	Qty.
1	E00737	Handle		1
2	E00740	Control box		1
3	E00741	Control box top plate		1
4	E00866	Potention meter		1
5	E00867	Switch		2
6	453290	Handle grip		1
7	E00743	Switch lever		1
8	454796	Limit switch		1
9	E00738	Handle pin		2
10	B20517	Bearing		2
11	971860	Washer for yoke shaft		1
12	E00646	Drive motor		1
13	E00732	Sprocket		1
14	476405	Traction wheel		1
15	E00742	Drive wheel shaft		1
16	009324	Bearing drive wheel		2
17	E00739	Drive wheel bracket		1
18	488551	Hub		1
19	477631	Idler sprocket		1
20	477630	Sprocket retainer		1
21	E00237	Chain		0.9m
22	478198	Quick release pin		1
23	979971	Cover plate chain guard		1
24	E00744	Chain guard		1

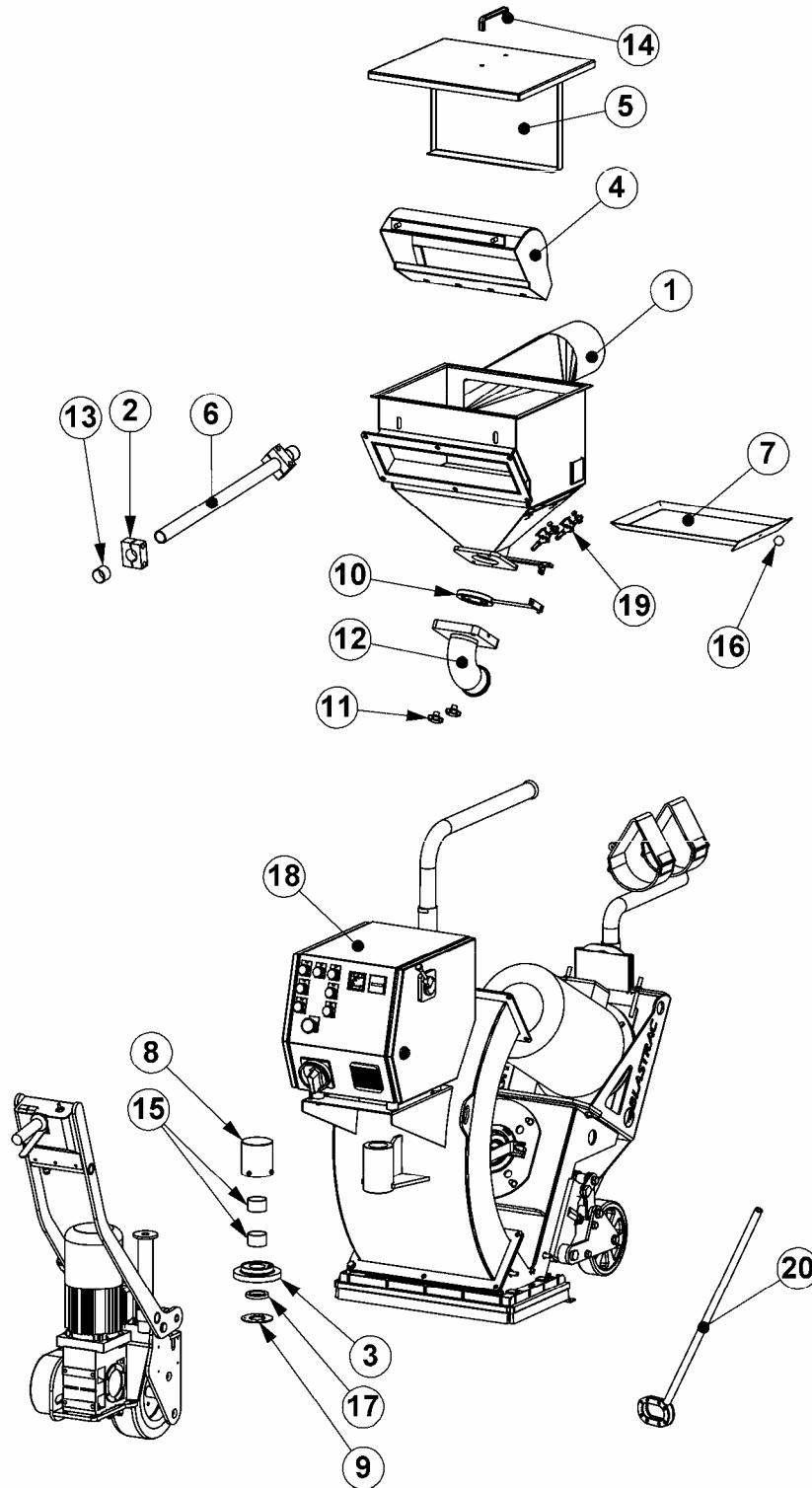
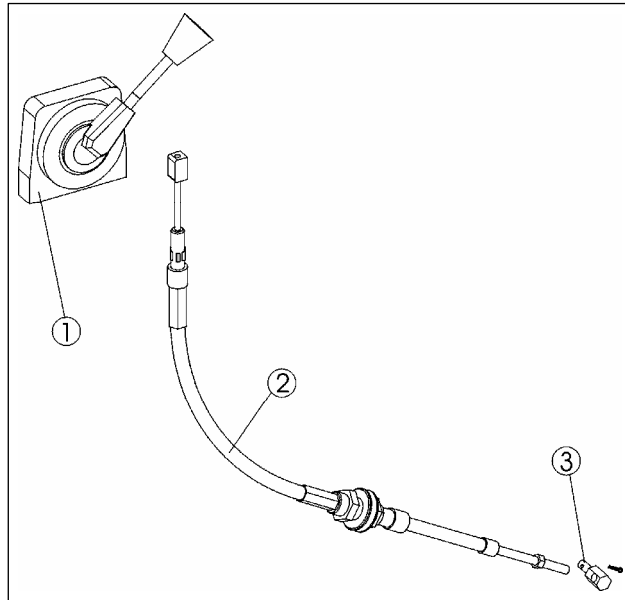


Fig. 04

Fig. 04

Item	Part number	Description	Remarks	Qty.
1	B20393	Separator		1
2	B21338	Pipe clamp.35mm (set of 2)		2
3	B20511	Lifting plate		1
4	B20262	Deflector		1
5	B20263	Separator cover		1
6	B21969	Cable tube		1
7	B20264	Separator tray		1
8	B20515	Shaft cover		1
9	B20512	Seal retainer		1
10	B20444	Magnetic valve assembly		1
11	000213	Clamp knob		2
12	B20443	Feed spout		1
13	E00337	Cable protection cap		2
14	970385	Handle		1
15	971341	Sleeve-bearing bush		2
16	B21325	Ball head for separator		1
17	B20295	Felt seal		1
18	E06540	Electrobox 1-15DS Global		1
19	001084	Clamp for separator tray		2
20	B21917	Lever		1



Item	Part number	Description	Remarks	Qty.
1	B20519	Abrasive control lever		1
2	B20520	Abrasive control cable		1
3	B20521	Pivot for abrasive control cable		1

2. Maintenance box

Item	Part number	Description	Remarks	Qty.
1	001071	Metal box 1-15DS		1
2	B20536K	Tune-up kit		3
3	B20394	Left liner		1
4	B20395	Right liner		1
5	B20907	Top liner		1
6	B20520	Abrasive control cable		1
7	B20428	Belt		1
8	B20413	Side brush right		2
9	B20424	Side brush left		2
10	B20412	Front brush		2
11	682652	Skid seal		1
12	001017	Open-end spanner 10 x 11		1
13	001018	Open-end spanner 13 x 15		1
14	001019	Open-end spanner 17 x 19		1
15	001042	Open-end spanner 24 x 26		1
16	001036	Ring spanner 8 x 9		1
17	000114	Ratchet spanner ½"		1
18	000146	Box spanner 13		1
19	000147	Box spanner 17		1
20	000148	Box spanner 19		1
21	000149	Box spanner 24		1
22	000150	Box spanner SW 8mm 120lg		1
23	001033	Allenkey 3		1
24	001016	Allenkey 6		1
25	001032	Screwdriver 5,5 x 100		1
26	001035	Insulated screwdriver		1
27	001056	Water pump pliers		1
28	000151	Hammer		1
29	001031	Safety glasses		1
30	000117	Maintenance box complete		1

Headquarter

*Blastrac BV The Netherlands
Utrechthaven 12
NL - 3433 PN Nieuwegein
Tel: 0031 (0)30 601 88 66
Fax: 0031 (0)30 601 83 33
info@blastrac.nl*

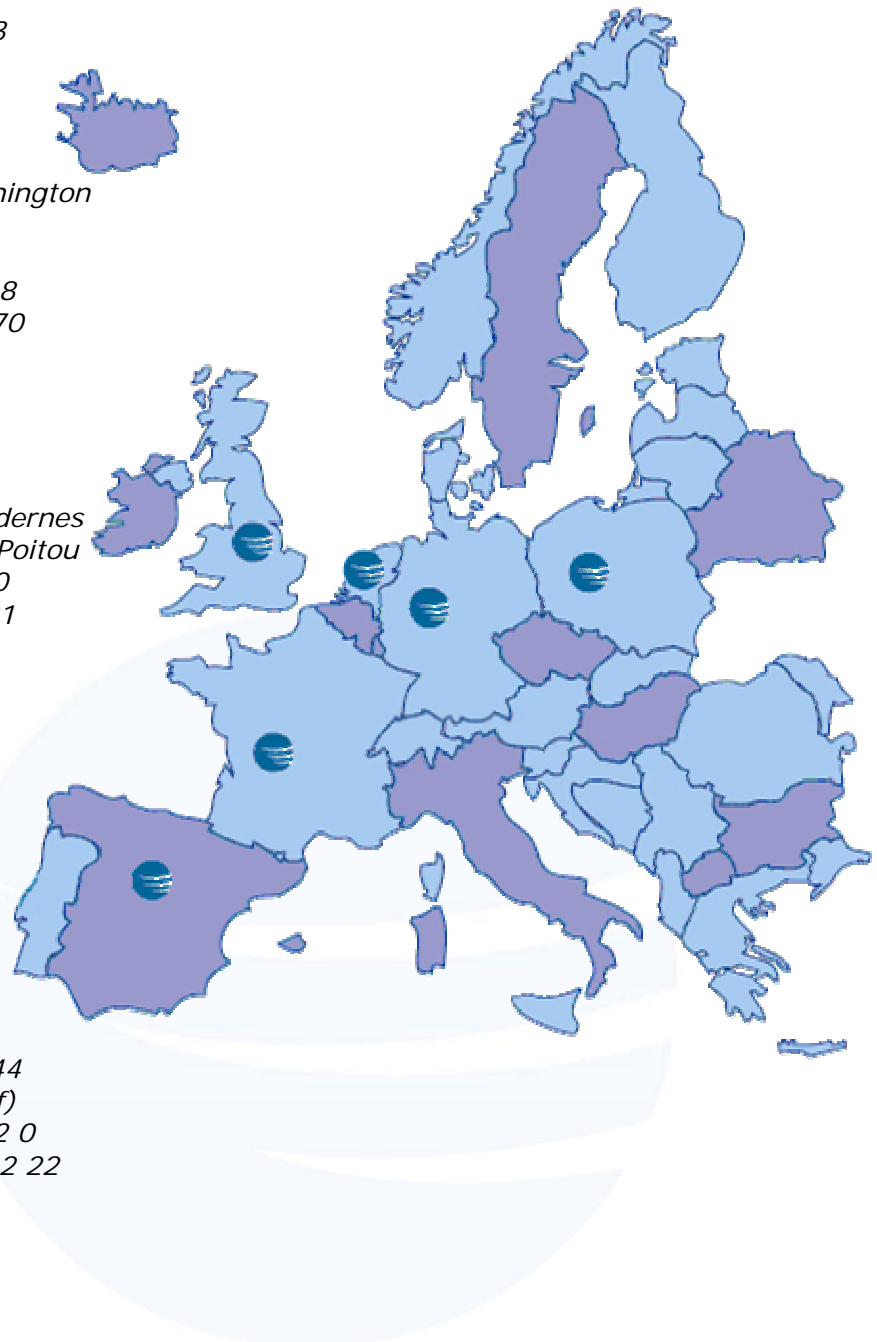
*Blastrac United Kingdom
Unit 2, Outgang Lane, Dinnington
Sheffield, South Yorkshire
GB – S25 3QU, England
Tel: 0044 (0) 1909 569 118
Fax: 0044 (0) 1909 567 570
info@blastrac.co.uk*

*Blastrac France
ZI
29, Avenue des Temps Modernes
F – 86360 Chasseneuil du Poitou
Tel: 0033 (0)5 49 00 49 20
Fax: 0033 (0)5 49 00 49 21
info@blastrac.fr*

*Blastrac Spain
Calle Copernico, 16
Nave 2
E – 28820 Coslada
Tel: 0034 91 660 10 65
Fax: 0034 91 672 72 11
info@blastrac.com.es*

*Blastrac Germany
Mathias Brügggen Straße 144
D – 50829 Köln (Ossendorf)
Tel: 0049 (0) 221 70 90 32 0
Fax: 0049 (0) 221 70 90 32 22
info@blastrac.de*

*Blastrac Poland
Golina, Dworcowa 47a
63-200 Jarocin
Tel: 0048 62 740 40 27
Fax: 0048 62 740 40 27
info@blastrac.pl*





Blastrac bv
Utrechthaven 12
3433 PN Nieuwegein
Netherlands
+31(0)30-6018866
+31(0)30-6018333

Project description 1-15DS MkII Global
Drawing number PJ09.1012.00
Arch. number E06540

Power supply 400VAC 50Hz
Input lead
Control Voltage 24VAC / 24VDC

Year of Manufacturing 2009

Remarks

Created on

Edit date

7-12-2009

by FJK

Number of pages 14

			Date	27-4-2009	Project name: 1-15DS MkII Global		Page description: Title page / cover sheet	Customer:	Blastrac BV	=
			Ed.	FJK				+		
			Appr					Page	1	
Modification	Date	Name	Last print	7-12-2009				Drawing number:	PJ09.1012.00	

Table of contents

Page	Page description	supplementary page field	Date	Edited by
1	Title page / cover sheet		27-4-2009	FJK
2	Table of contents		27-4-2009	FJK
3	Legend		27-4-2009	FJK
4	Symbol library		7-4-2009	FJK
5	Panel layout		7-4-2009	FJK
6	Panel layout2		7-4-2009	FJK
10	Main Current		27-4-2009	FJK
11	Main Current		27-4-2009	FJK
12	Main Current		27-4-2009	FJK
13	Control Current		8-4-2009	FJK
100	Terminal-strip overview : PE - 1		6-4-2009	FJK
101	Terminal diagram		6-4-2009	FJK
102	Terminal diagram X0		6-4-2009	FJK
103	Terminal diagram X1		6-4-2009	FJK
104	Terminal diagram X2		6-4-2009	FJK
200	Part list		27-4-2009	FJK

WIRE COLOR

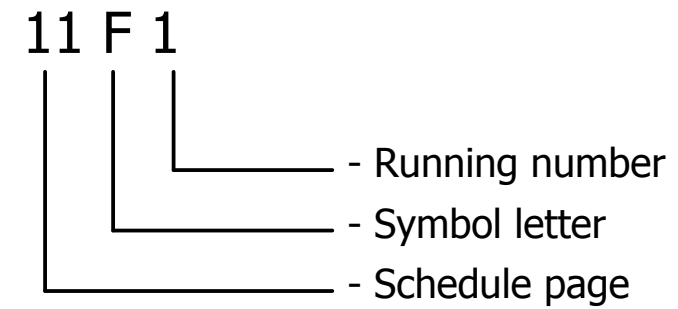
Main Voltage 400/230V

<u>Phase</u>	<u>Colors</u>
L1	- Black
L2	- Black
L3	- Black
N	- Light Blue
Earth / PE	- Yellow/Green

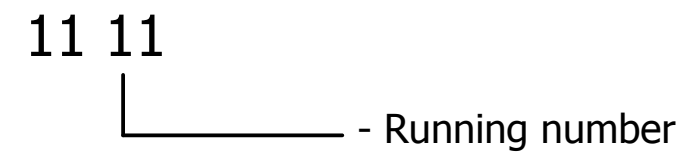
Control Voltage

Phase (24VAC)	- Red
Hook-up wire	- Red
Neutral (24VAC)	- Red
Plus (24VDC)	- White
Hook-up wire	- White
Minus / Ground (24VDC)	- White

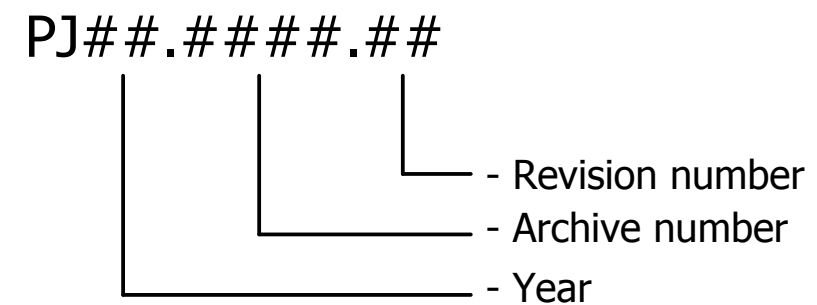
SYMBOL CODE



CORE CODE

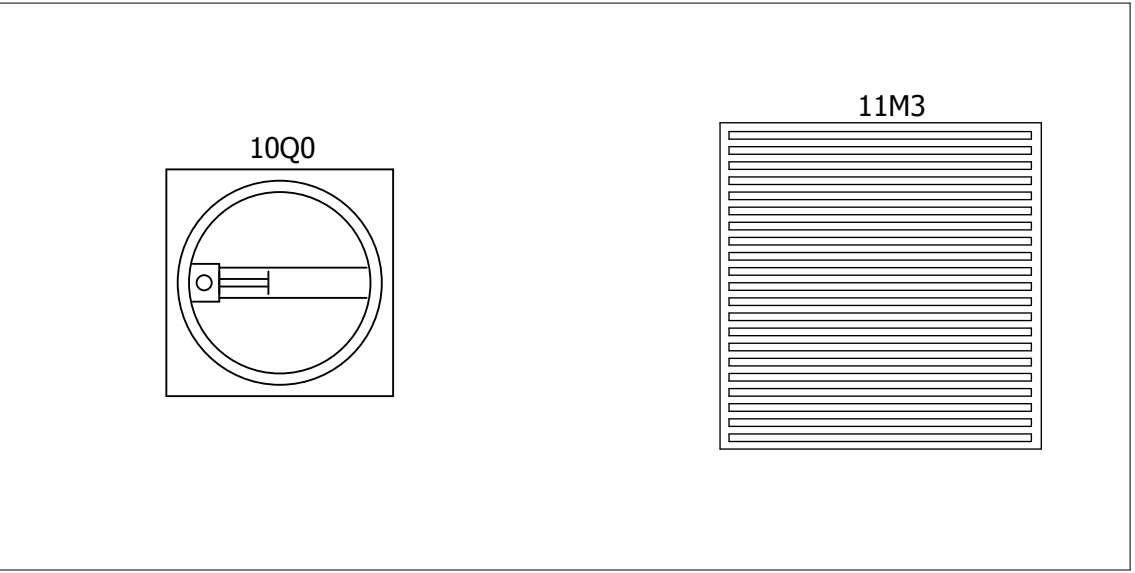
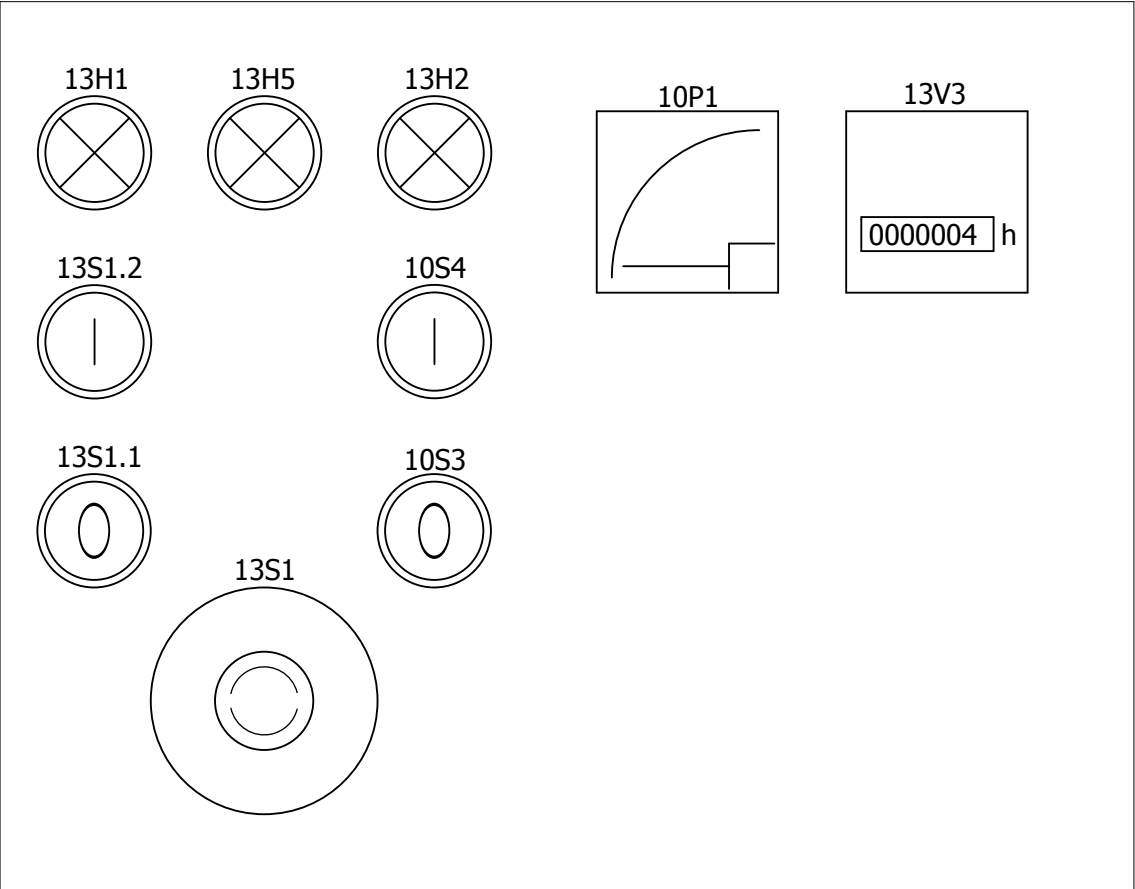


DRAWING NUMBER



			Date	27-4-2009	Project name:	1-15DS MkII Global		Page description:	Legend	Customer:	Blastrac BV	=
			Ed.	FJK						Drawing number:	PJ09.1012.00	+
Modification	Date	Name	Last print	7-12-2009								Page

	auxiliary contact	hulpcontact		signal light	signaallamp		Safety fuse	smeltveiligheid
	Power contact	vermogenscontact		horn	hoorn		Fused switch, three-pole	schakelbare scheider
	NO contact, opens with time delay	maakcontact, vertraagd open		apm.meter	amperemeter		Fused disconnect, three-pole	scheider "klapbak"
	NO contact, closes with time delay	maakcontact, vertraagd sluitend		runninghour counter	urenteller		Main switch	hoofdschakelaar
	NC contact, opens with time delay	verbreekcontact, vertraagd open		transformer	transformator		Circuit breaker, single-pole	installatieautomaat 1-polig
	NC contact, closes with time delay	verbreekcontact, vertraagd sluitend		Contactor coil relay coil	spoel		Circuit breaker, two-pole	installatieautomaat 2-polig
	Pushbutton rebound	drukknop terugverend		Contactor/relay coil, with pick-up delay	Spoel met opkomvertraging		Circuit breaker, three-pole	installatieautomaat 3-polig
	Pushbutton locking	drukknop blijvend		Contactor/relay coil, with drop-out delay	spoel met afvalvertraging		Power circuit breaker motor overload switch with switch mechanism	motorbeveiligingsschakelaar
	Rotary switch rebound	tip draaischakelaar		Contactor pulse coil relay pulse coil,	spoel puls		Valve	elektrisch bediende klep
	Rotary switch locking	draaischakelaar		Tube light	TL verlichting		Resistor with movable contact	regelbare weerstand
	Emergency stop rotary unlock	noodstop met draaibare vrijgave		Resistor / Heating	weerstand verwarming		Terminal	rijgklem
	Thermostatic switch	thermostaat hygrostaat		Socket	wandcontactdoos		Terminal with fuse	rijgklem met zekering
	Pressure switch	drukschakelaar		Current transformer	stroomtransformator		Rectifier	gelijkrichter
	Limit switch	eindschakelaar						
	Proximity switch	naderingsschakelaar						



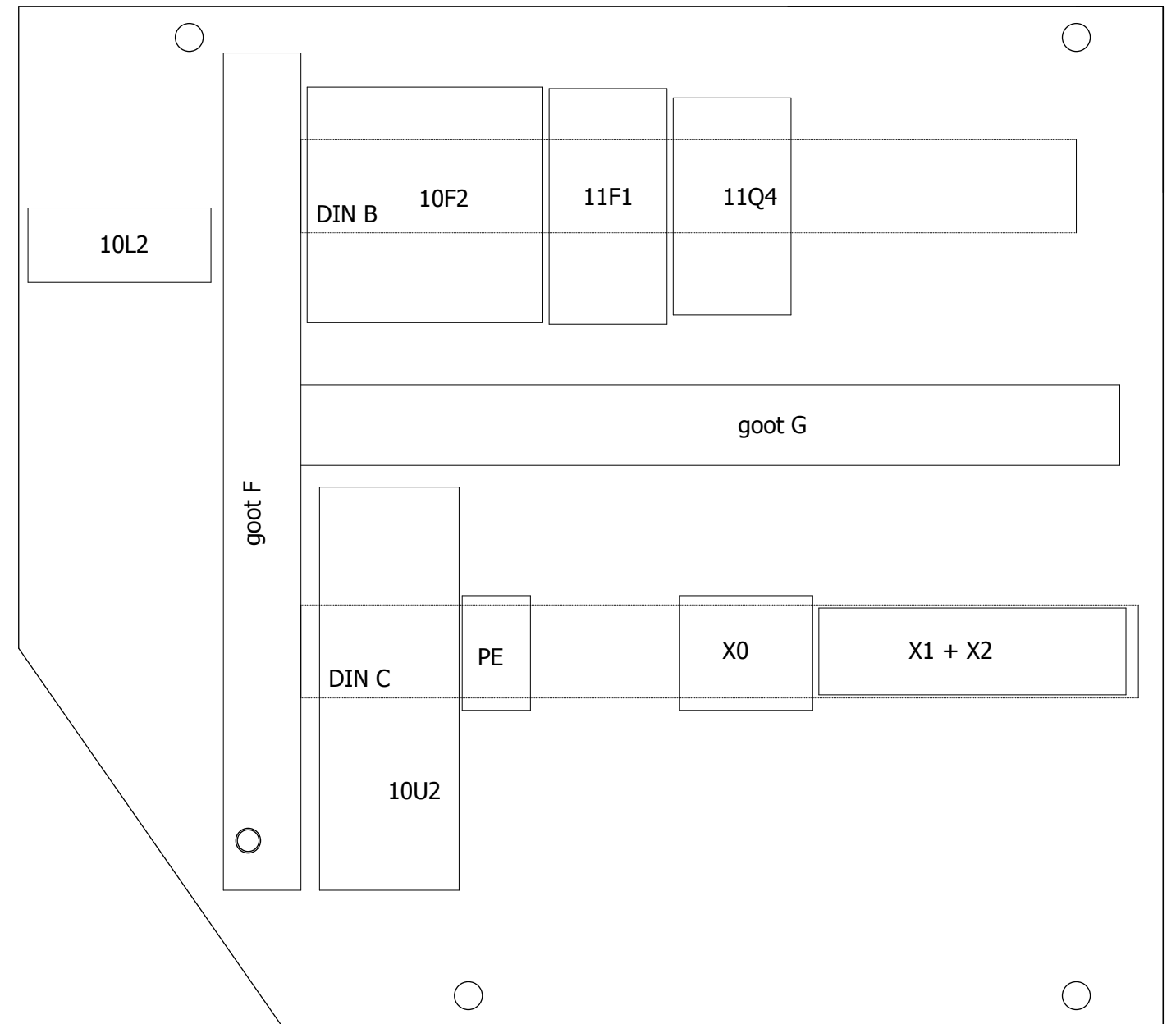
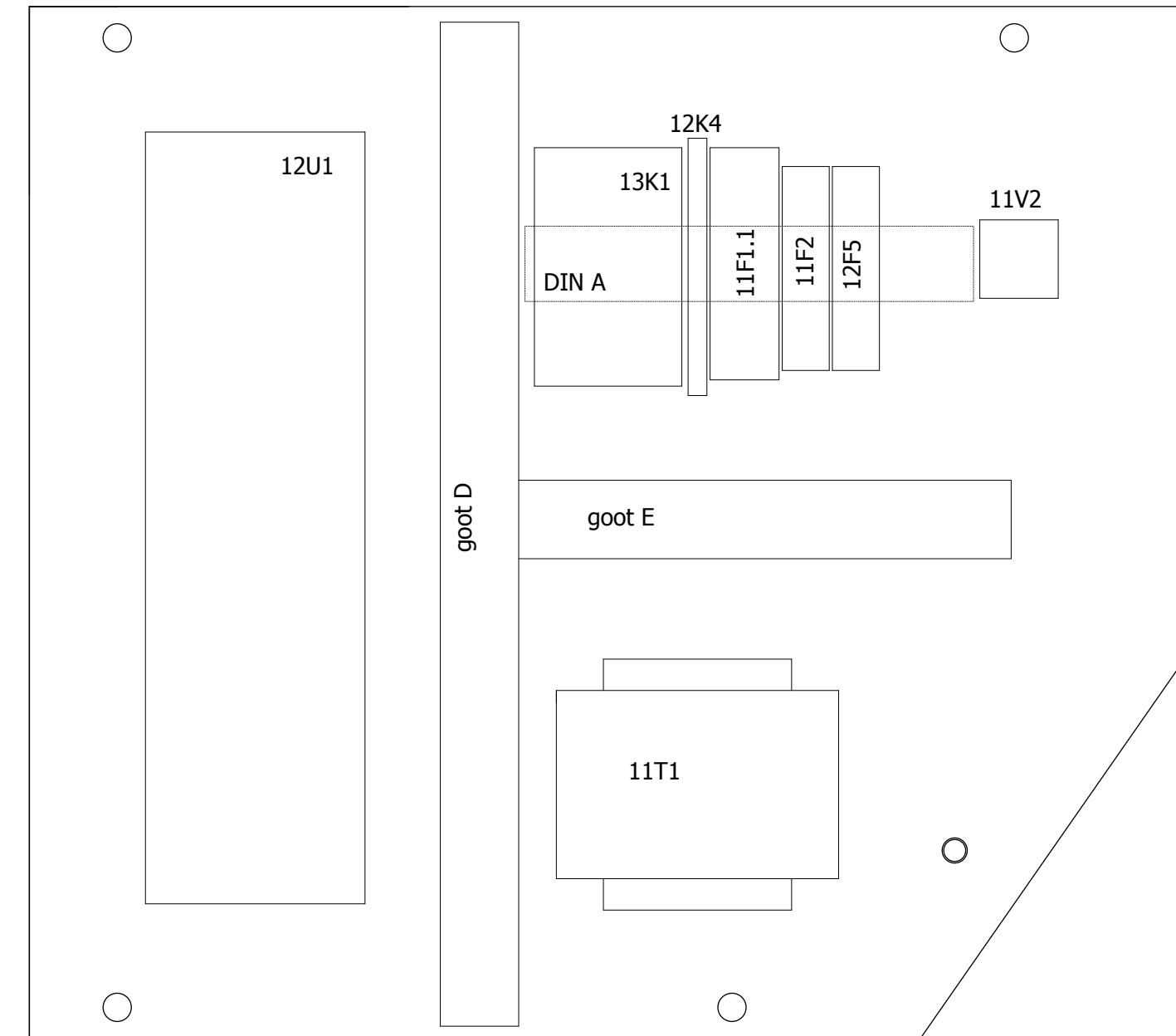
Date	7-4-2009
Ed.	FJK
Appr	
Last print	7-12-2009

Project name:
1-15DS MkII Global



Page description:
Panel layout

Customer: **Blastrac BV**
Drawing number: **PJ09.1012.00**



Modification	Date	Name	Last print	7-12-2009
			Date	7-4-2009
			Ed.	FJK
			Appr	

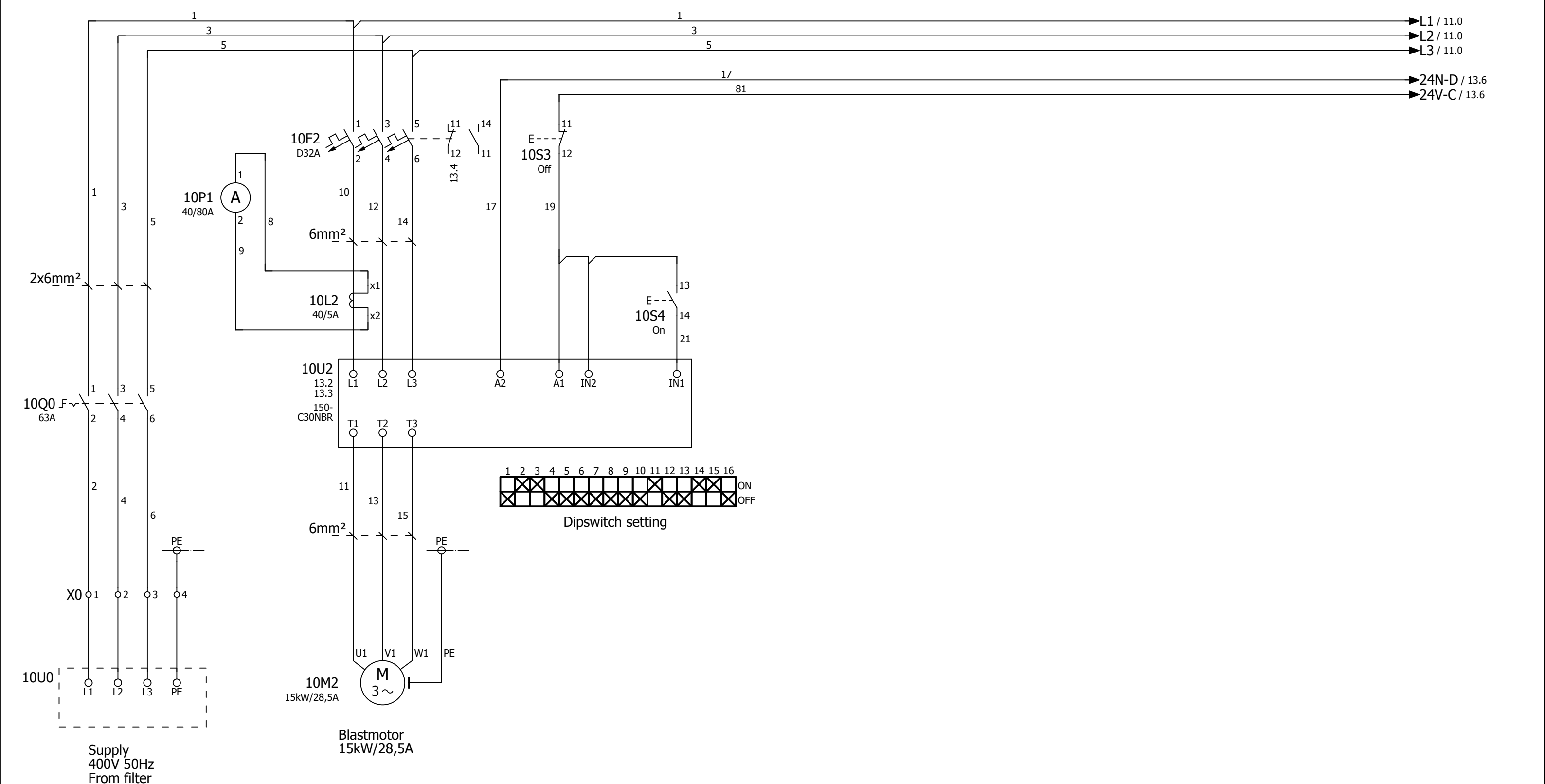
Project name:	1-15DS MkII Global
---------------	--------------------



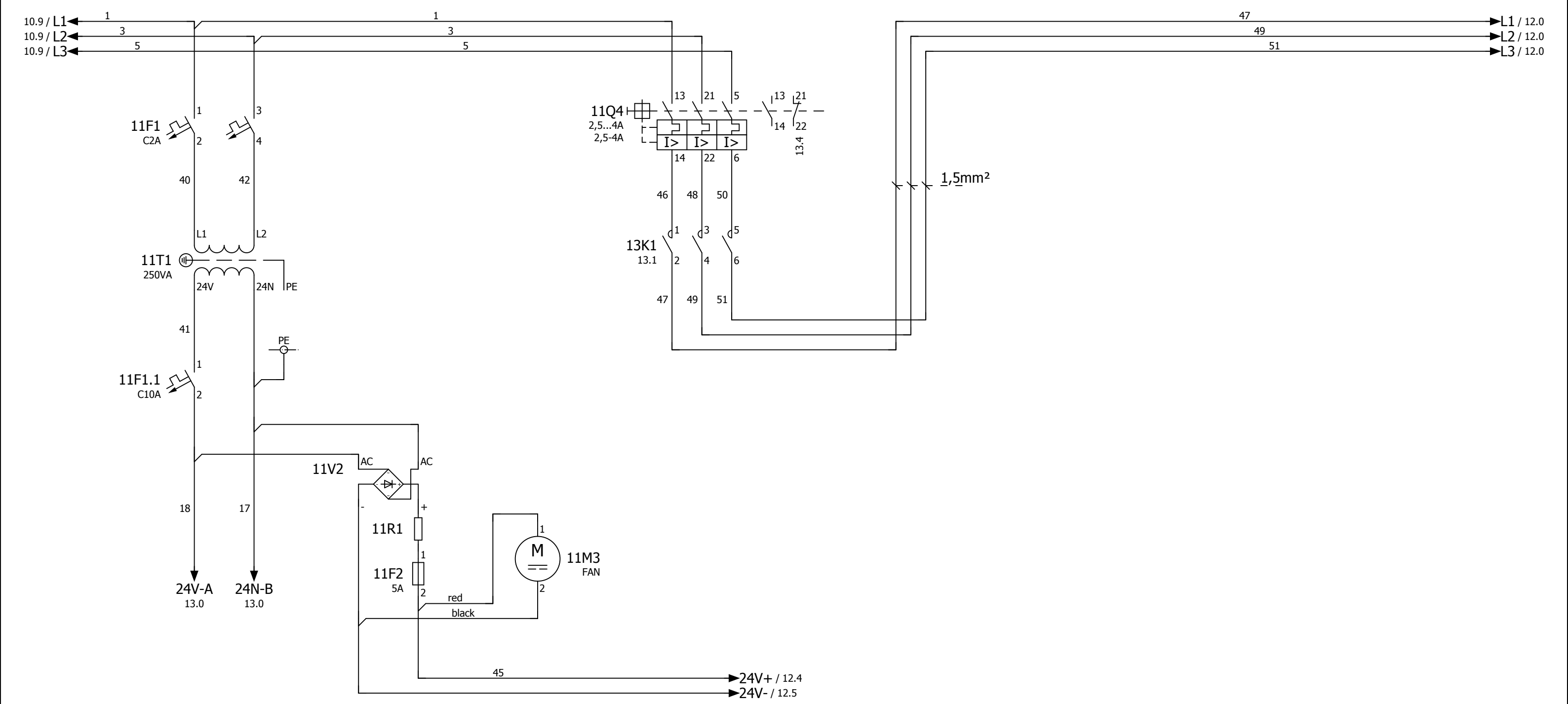
Page description:	Panel layout2
-------------------	---------------

Customer:	Blastrac BV
Drawing number:	PJ09.1012.00

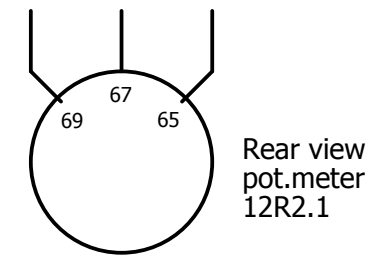
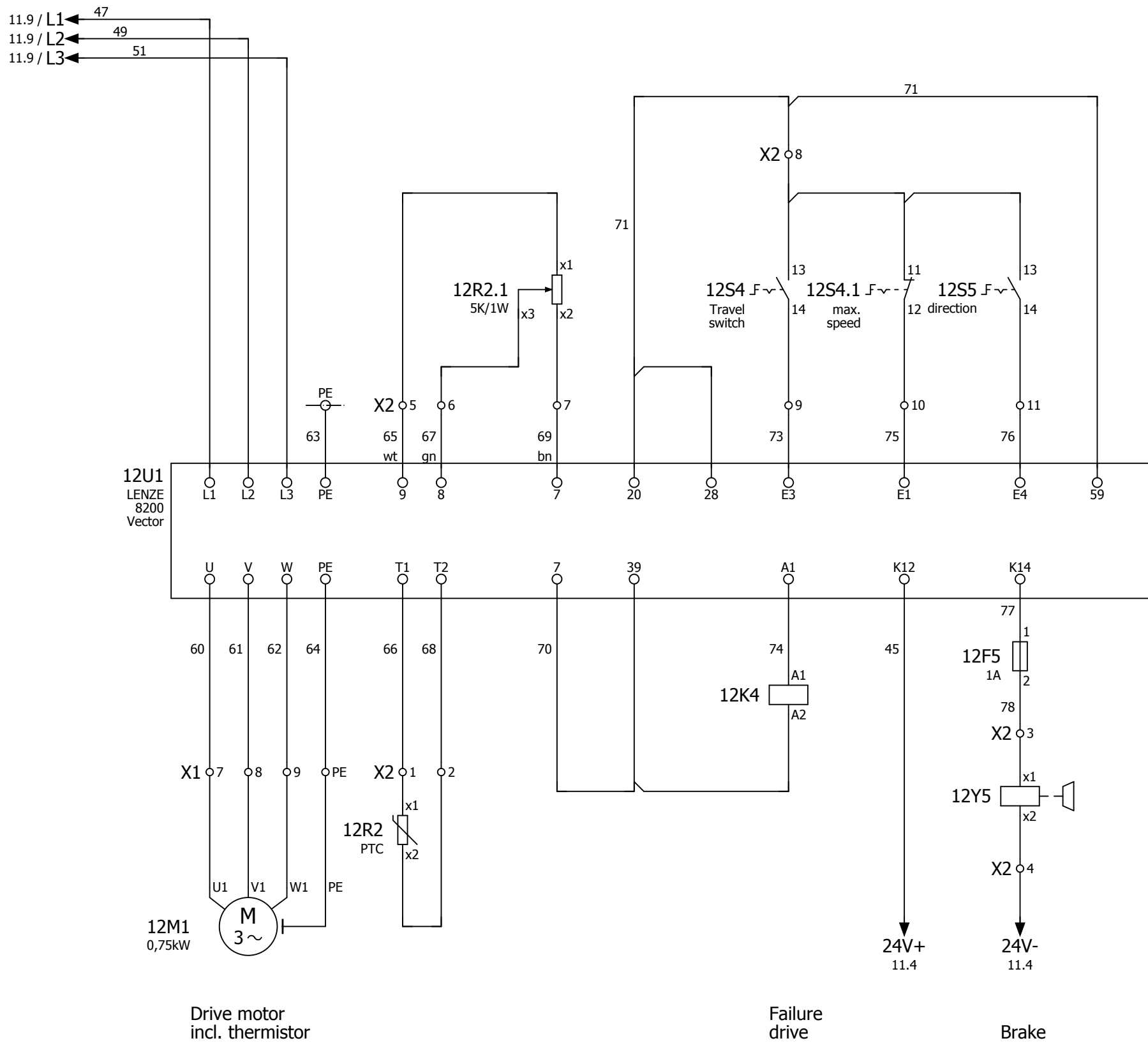
=	
+	
Page	6



			Date	27-4-2009	Project name:			Page description:		Customer:	Blastrac BV	
			Ed.	FJK	1-15DS MkII Global		Main Current			Drawing number:	PJ09.1012.00	=
			Appr					+				
Modification	Date	Name	Last print	7-12-2009								



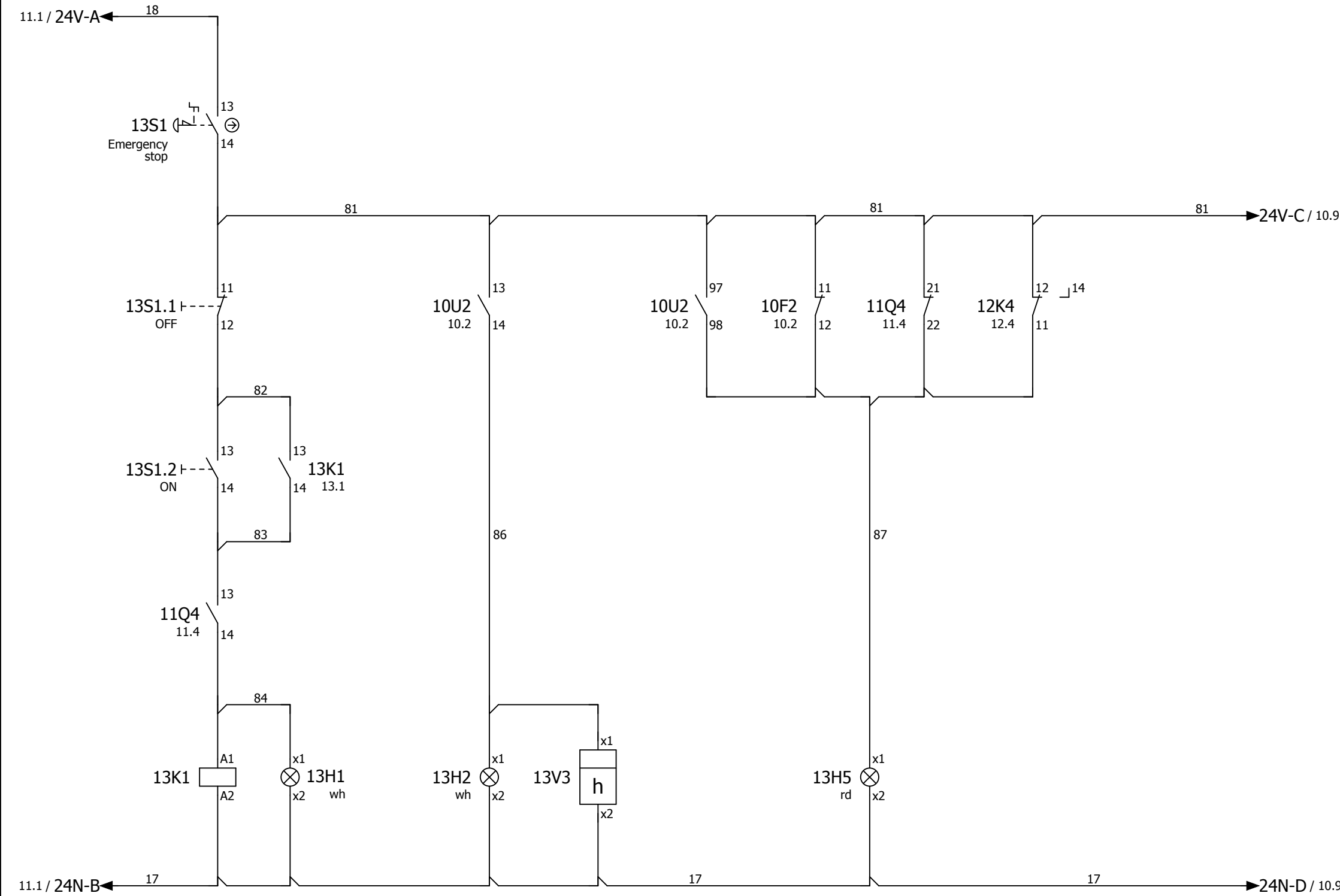
			Date	7-12-2009	Project name:			Page description:		Customer:	Blastrac BV	
			Ed.	FJK		1-15DS MkII Global						
			Appr									
Modification	Date	Name	Last print	7-12-2009						Drawing number:	PJ09.1012.00	Page 11



Drive parameters	1-15DS Global
C0007/000	-2-
C0008/000	-7-
C0010/000	0 Hz
C0011/000	50 Hz
C0012/000	2,5 sec.
C0013/000	1 sec.
C0015/000	50 Hz
C0016/000	5 %
C0017/000	0 Hz
C0037/000	50 Hz
C0087/000	1490 rpm
C0088/000	2,80 A
C0089/000	50 Hz
C0090/000	400 V
C0091/000	0,8
C0105/000	0,8 sec.
C0119/000	-1-
C0142/000	-3-
C0148/000	-1- (*)
C0410/001	-1-
C0415/001	-6-
C0415/002	-25-
C0416/000	-2-
C0417/001	-1-

(*) Motor identification will be 0 after applying

Date		27-4-2009		Project name:		1-15DS MkII Global		Page description:		Customer:		Blastrac BV		=	
Ed.		FJK												+	
Appr															
Last print		7-12-2009								Drawing number:		PJ09.1012.00		Page	
Modification		Date		Name										12	



Control voltage ON Blasting ON Hours RUN Failure

- A1 — A2
- 1 — 2 11.4
 - 3 — 4 11.4
 - 5 — 6 11.4
 - 13 — 14 13.1
 - 21 — 22

			Date	8-4-2009	Project name:			Page description:		Customer:	Blastrac BV	
			Ed.	FJK	1-15DS MkII Global		Control Current			Drawing number:	PJ09.1012.00	=
			Appr									+
Modification	Date	Name	Last print	7-12-2009								Page 13

Terminal diagram

function text	Cable name				Strip X0				Cable name				Page / column		
	cable type				Target designation	Connection point	terminal	Jumper	Target designation	Connection point	cable type				
					10U0	L1	1	.	10Q0	2					10.0
					10U0	L2	2	.	10Q0	4					10.0
					10U0	L3	3	.	10Q0	6					10.0
					10U0	PE	4	.		PE					10.1

Terminal diagram

function text	Cable name	cable type	Strip X1					Cable name	cable type	Page / column
			Target designation	Connection point	terminal	Jumper	Target designation			
			12M1	U1	7	.	12U1	U	12.1	
			12M1	V1	8	.	12U1	V	12.1	
			12M1	W1	9	.	12U1	W	12.1	
			12M1	PE	PE	.	12U1	PE	12.1	

Terminal diagram

F13_001

function text	Cable name	cable type	Strip X2					Cable name	cable type	Page / column
			Target designation	Connection point	terminal	Jumper	Target designation			
			12R2	x1	1	.	12U1	T1	12.2	
			12R2	x2	2	.	12U1	T2	12.2	
			12Y5	x1	3	.	12F5	2	12.5	
			11V2	-	4	.	12Y5	x2	12.5	
			11M3	2						
			12R2.1	x1	5	.	12U1	9	12.2	
			12R2.1	x3	6	.	12U1	8	12.2	
			12R2.1	x2	7	.	12U1	7	12.2	
			12S4	13	8	.	12U1	20	12.4	
							12U1	59		
			12S4	14	9	.	12U1	E3	12.4	
			12S4.1	12	10	.	12U1	E1	12.4	
			12S5	14	11	.	12U1	E4	12.5	

Date	27-4-2009
Ed.	FJK
Appr	
Last print	7-12-2009

Project name:	1-15DS MkII Global
---------------	--------------------



Page description:	Terminal diagram
-------------------	------------------

Customer:	Blastrac BV
Drawing number:	PJ09.1012.00

Parts list

device tag	Quantity	designation	Type number	part number
10F2	1	Miniature circuit breaker 3P D32A	C60N-1492-SP3D320	16.01.0690
10F2	1	Auxiliary contact 1x change over	1492-ASPH3	1492-ASPH3
11F1	1	Miniature circuit breaker UL type	MCB.UL.C2A.2p	1492-SP2C020
11F1.1	1	Miniature circuit breaker 1P C10A	C60N-1492-SP1C100	16.01.0403
11F2	1	Fuse terminal	WK 10/Si U 5x20	WK 10/Si U 5x20
11F2	1	End plate WK10	AP 10/Si	AP 10/Si
12F5	1	Fuse terminal	WK 10/Si U 5x20	WK 10/Si U 5x20
12F5	1	End plate WK10	AP 10/Si	AP 10/Si
13H1	1	Signal light White	XB5.AVB1	XB5.AVB1
13H2	1	Signal light White	XB5.AVB1	XB5.AVB1
13H5	1	Signal light Red	XB5.AVB4	XB5.AVB4
12K4	1	Relay 24V 1x changeover	38.51.7.024.0050 REL	38.51.7.024.0050
13K1	1	Contactorm	LC1D09B7	LC1 D09B7
10L2	1	Current transformer	IBA 40A/5A KL.3	06.02.0098
11M3	1	Fan	FAN 8314	FAN 80*80*32 24VDC
11M3	1	Fan filter		221-336 kast kl.beh.
11M3	1	Fan finger guard		250-1612 kast kl.beh.
10P1	1	Amp-meter 40-80-5A	IQ48/EIV48-40/5/2VO	15.01.0215
10Q0	1	Switch	P3-63/EA/SVB BED.LS	031607
11Q4	1	Motor circuit breaker	GV2 ME08	01.01.0244
11Q4	1	auxiliary contact NO+NC - front mount.	GV.AE11	SCGVAE11
12R2.1	1	Trim-pot 1K	Potmeterset 1K ZB4	Potmeterset 1K ZB4
10S3	1	Pushbutton RED "STOP"	ZB5 AA434	ZB5 AA434
10S3	1	element NC	ZB5 AZ102	ZB5 AZ102
10S4	1	Pushbutton GREEN "START"	ZB5 AA333	08.01.0237
10S4	1	element NO	ZB5 AZ101	ZB5 AZ101
12S4	1	Standswitch	XCK-P2102P26 Bed.eindschak.	08.07.0109
12S4.1	1	Pushbutton 16mm White	XB6-CA11B	08.01.0243
12S5	1	Pushbutton 16mm White	XB6-CA11B	08.01.0243
13S1	1	Pushbutton Emergency stop	ZB4 BS54	ZB4 BS54
13S1	1	element NC	ZB4 BZ102	ZB4 BZ102
13S1.1	1	Pushbutton RED "STOP"	ZB5 AA434	ZB5 AA434
13S1.1	1	element NC	ZB5 AZ102	ZB5 AZ102
13S1.2	1	Pushbutton GREEN "START"	ZB5 AA333	08.01.0237
13S1.2	1	element NO	ZB5 AZ101	ZB5 AZ101
11T1	1	Transformer 400/230V-24V 250VA	866810	866810
10U2	1	Softstarter	150C30NBR	150C30NBR
12U1	1	Frequency inverter	FREQ.REG 1.5kW	13142441
12U1	1	Frequency inverter display	FREQ.REG BED DISPLAY	E82ZBC
12U1	1	Frequency inverter	FREQ.REG I/O	00491449
11V2	1	Rectifier 400V-35A	F400C35A	21.06.0015
13V3	1	Elapsed time counter 48*48	BG40.17	BG 40.17